

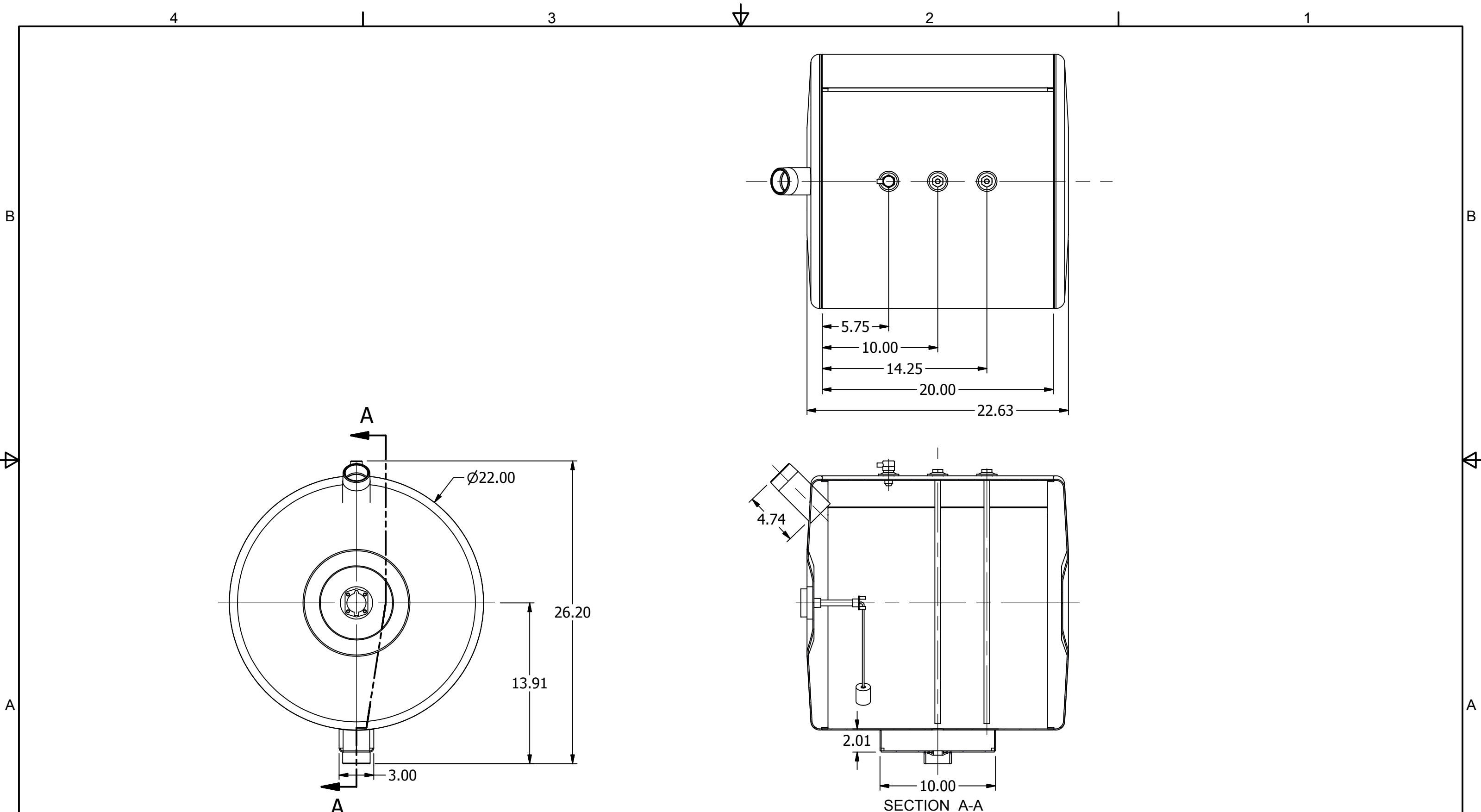
Parts List			
ITEM	QTY	PART NUMBER	DESCRIPTION
1	2	22_DROP_TUBE	22" REEFER DROP TUBE
2	1	AGF-8175	ALUMINUM GAUGE MOUNTING RING
3	1	AR2235WS	.100 MILL ALUM., 22" OD WRAP SHEET
4	1	ASV-0500	1/2" NPT DIESEL ANTI-SPILL VENT
5	4	AWF0500	1/2" NPT ALUMINUM WELD FLANGE
6	1	FGA-2200	ROCHESTER 10" RADIUS FUEL GAUGE
7	1	RA0000FL	.100 MILL ALUM 22" REEFER FILL HEAD
8	1	RA0000NF	.100 MILL ALUMINUM 22" SADDLE HEAD
9	1	RA0000SB	.100 MILL ALUMINUM SUMP BOX
10	1	RA0000SR	2" SCH 40 x 1 ALUMINUM SUMP RING
11	1	RA2000FN	2" SCH 80 x 5 ALUMINUM FILL NECK

AMP PARTS INCLUDE:  
 -FNC-2000 2" FEMALE NON-VENTED CAP  
 -BCV-0500 1/2" NPT DRAIN/CHECK PLUG ASSEMBLY

\* OPTIONAL:  
 -RMK-822-S MOUNTING KIT

NOTE:  
 -PLUG ALL PORTS FOR SHIPMENT

<b>AMERICAN MOBILE POWER</b> <small>PH: (800) 634-8265 FAX: (765) 948-3403</small>	DRAWING BY: BPKNIGHT	DESIGN FOR: <b>NAM</b>	FILE NAME: AR2235	
	COMPLETED: 8/9/2005		SHEET: 1 of 3	SHEET SIZE: B



<b>AMERICAN MOBILE POWER</b> <small>PH: (800) 634-8265 FAX: (765) 948-3403</small>	DRAWING BY: <b>BPKNIGHT</b>	DESIGN FOR: <b>NAM</b>	FILE NAME: <b>AR2235</b>	
	COMPLETED: <b>8/9/2005</b>		SHEET: <b>2 of 3</b>	SHEET SIZE: <b>B</b>