

4

3

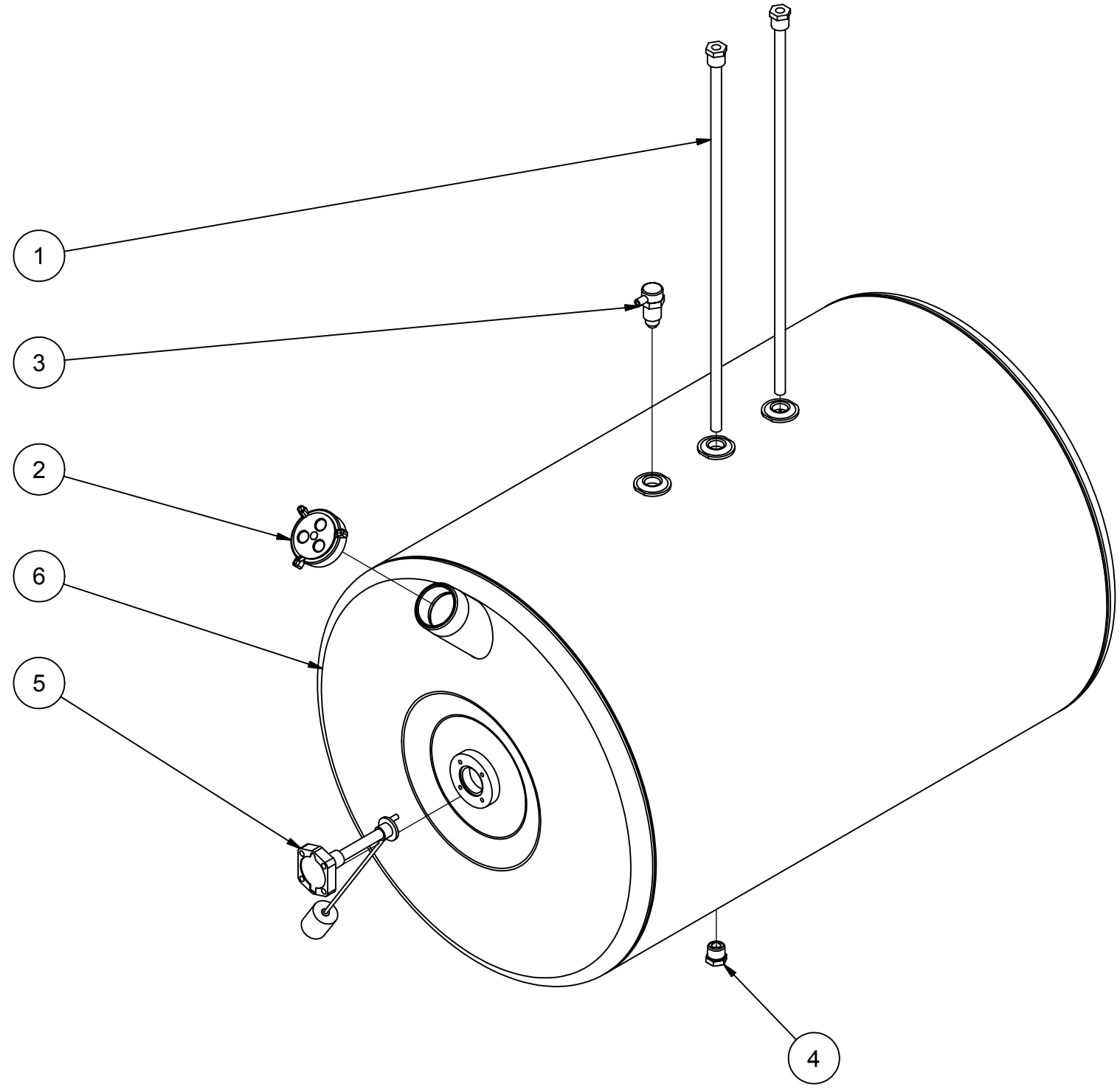
2

1

Parts List

ITEM	QTY	PART NUMBER	DESCRIPTION
1	2	22_DROP_TUBE	22" REEFER DROP TUBE
2	1	600133	VELVAC NON-VENTED DIESEL FILL CAP
3	1	ASV-0500	1/2" NPT DIESEL ANTI-SPILL VENT
4	1	BCV-0500	1/2" NPT - 1/8" NPT Brass/Steel Ball Check Valve
5	1	FGA-2200	ROCHESTER 10" RADIUS FUEL GAUGE
6	1	N_AR2250	AMP ASSEMBLY 31 1/2 lbs

B * OPTIONAL AMP PARTS:
 -RMK-822-S MOUNTING KIT
 NOTE:
 -PLUG ALL PORTS FOR SHIPMENT



AMERICAN MOBILE POWER PH: (800) 634-8265 FAX: (765) 948-3403	DRAWING BY: BPKNIGHT	DESIGN FOR: NAM	FILE NAME: AR2250	
	COMPLETED: 3/30/2005		SHEET: 1 of 5	SHEET SIZE: B

4

3

2

1

A

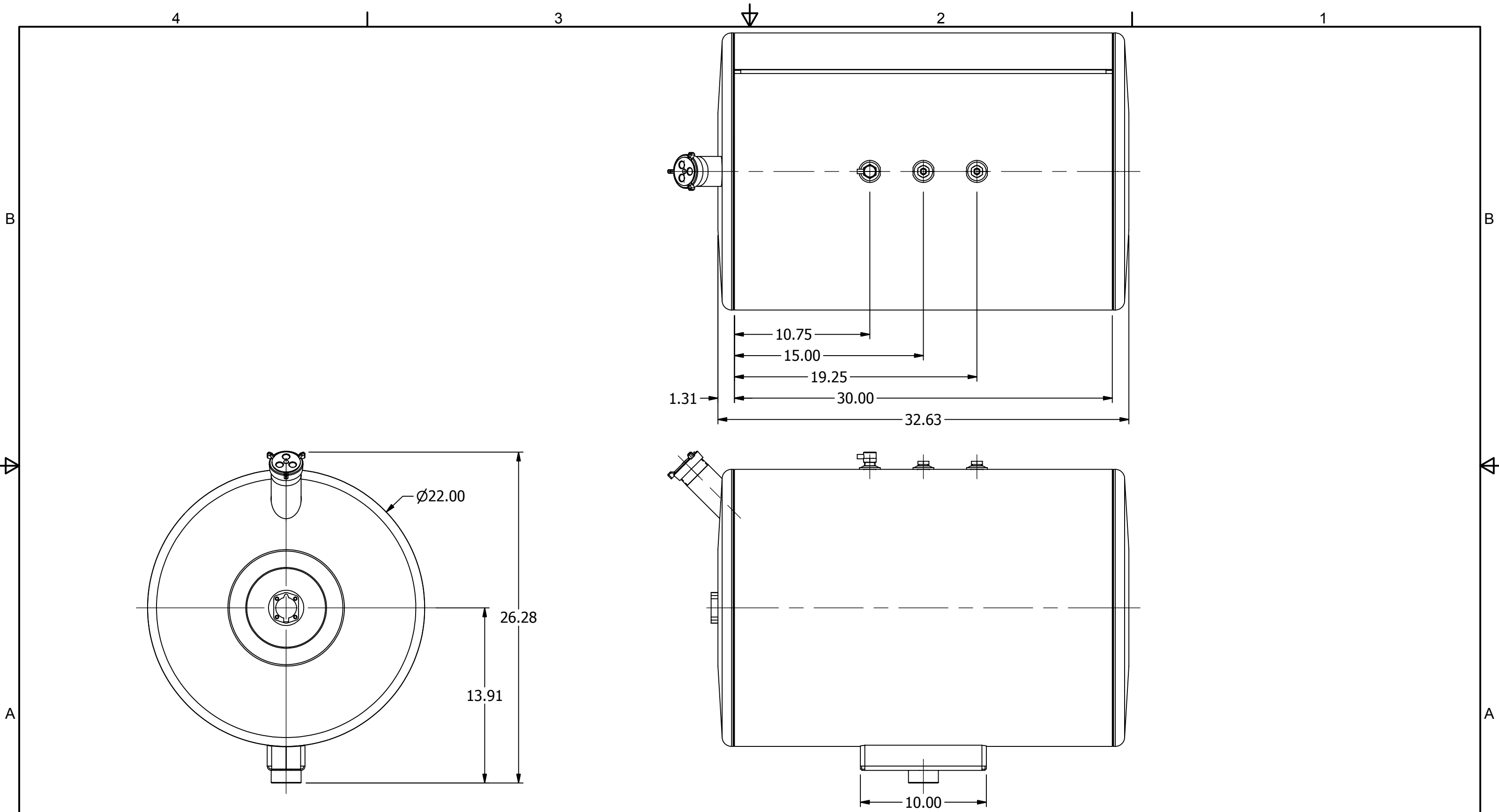
A

A

A

B

B



AMERICAN MOBILE POWER PH: (800) 634-8265 FAX: (765) 948-3403	DRAWING BY: BPKNIGHT	DESIGN FOR: NAM	FILE NAME: AR2250	
	COMPLETED: 3/30/2005		SHEET: 2 of 5	SHEET SIZE: B