

4

3

2

1

Parts List

ITEM	QTY	PART NUMBER	DESCRIPTION
1	2	22_DROP_TUBE	22" REEFER DROP TUBE
2	1	AGF-8175	ALUMINUM GAUGE MOUNTING RING
3	1	AR2275WS	.100 MILL ALUM., 22" OD WRAP SHEET
4	1	ASV-0500	1/2" NPT DIESEL ANTI-SPILL VENT
5	4	AWF0500	1/2" NPT ALUMINUM WELD FLANGE
6	1	FGA-2200	ROCHESTER 10" RADIUS FUEL GAUGE
7	1	RA0000FL	.100 MILL ALUM 22" REEFER FILL HEAD
8	1	RA0000NF	.100 MILL ALUMINUM 22" SADDLE HEAD
9	1	RA0000SB	.100 MILL ALUMINUM SUMP BOX
10	1	RA0000SR	2" SCH 40 x 1 ALUMINUM SUMP RING
11	1	RA2000FN	2" SCH 80 x 5 ALUMINUM FILL NECK

AMP PARTS INCLUDE:
 -FNC-2000 2" FEMALE NON-VENTED CAP
 -BCV-0500 1/2" NPT DRAIN/CHECK PLUG ASSEMBLY

* OPTIONAL:
 -RMK-822-S MOUNTING KIT

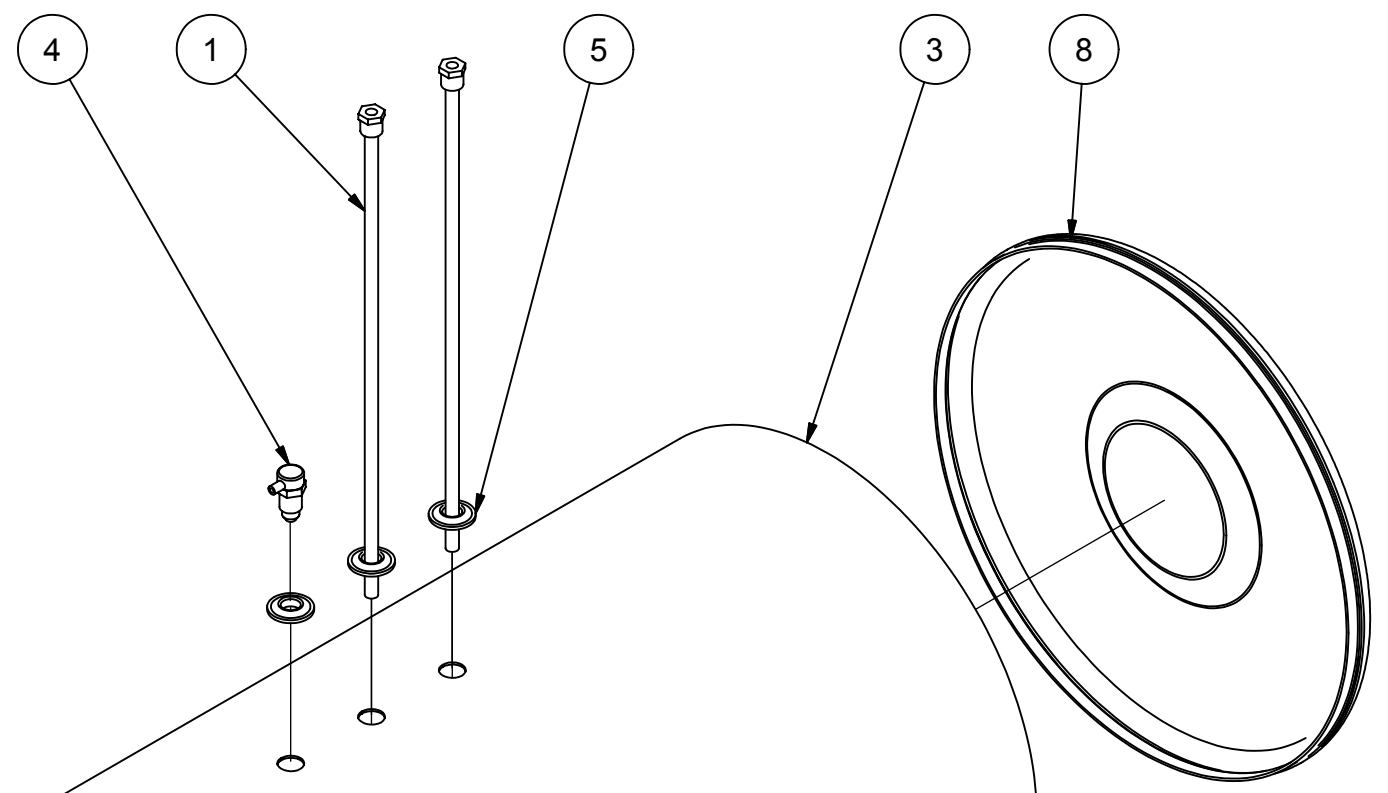
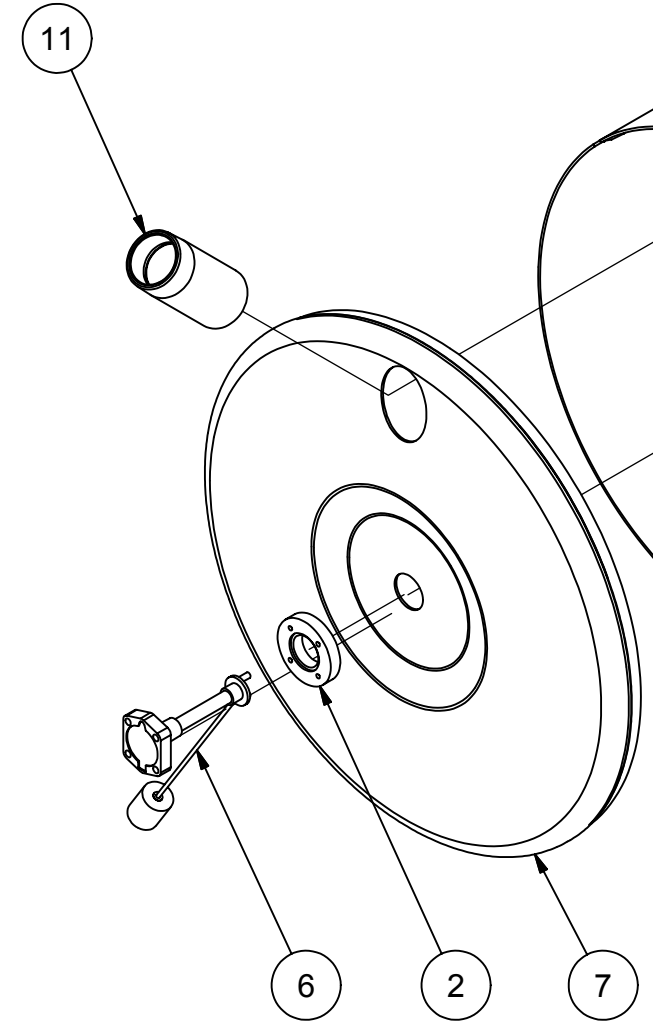
NOTE:
 -PLUG ALL PORTS FOR SHIPMENT

B

B

A

A



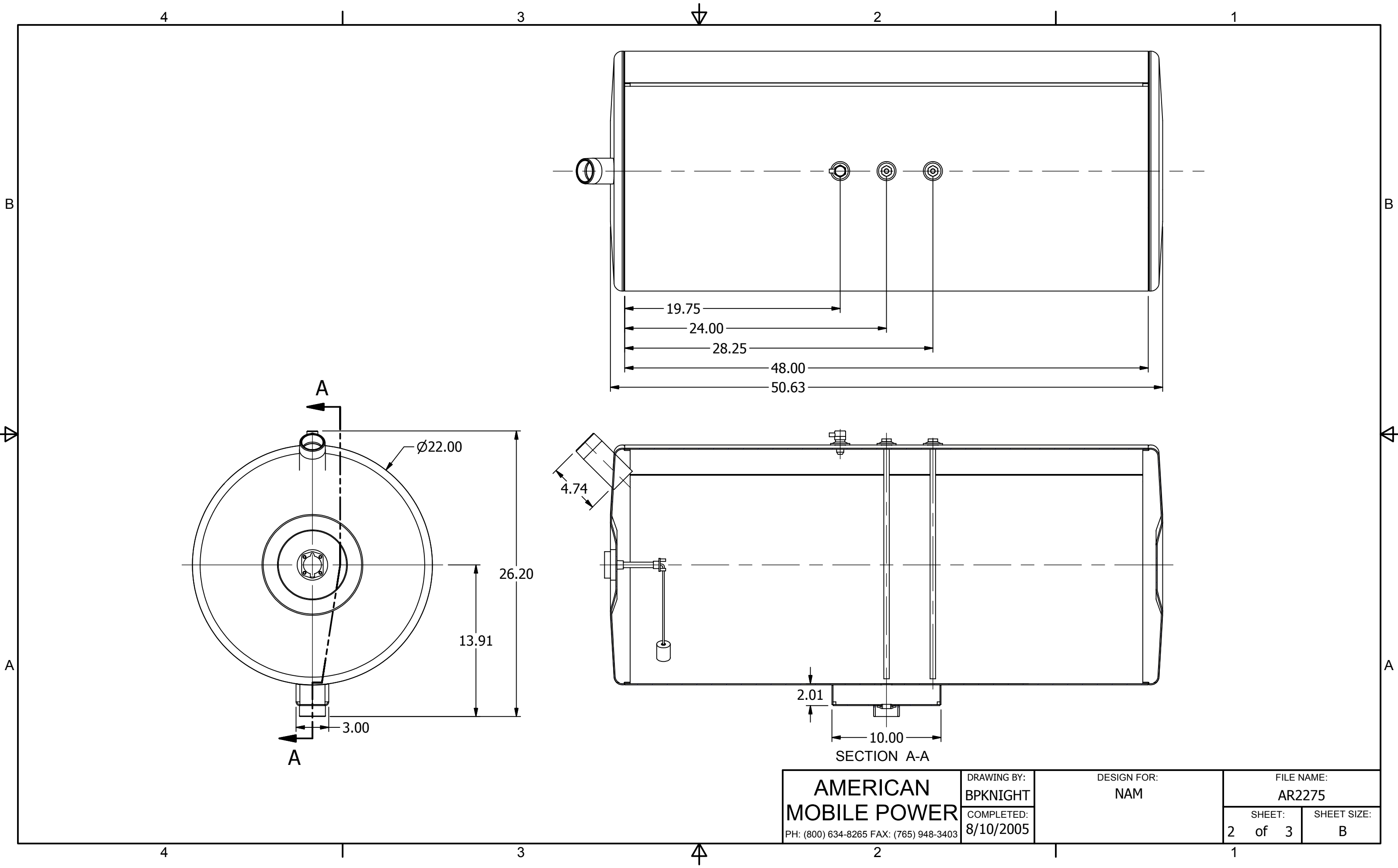
AMERICAN MOBILE POWER PH: (800) 634-8265 FAX: (765) 948-3403	DRAWING BY: BPKNIGHT	DESIGN FOR: NAM	FILE NAME: AR2275	
	COMPLETED: 8/10/2005		SHEET: 1 of 3	SHEET SIZE: B

4

3

2

1



AMERICAN MOBILE POWER PH: (800) 634-8265 FAX: (765) 948-3403	DRAWING BY: BPKNIGHT	DESIGN FOR: NAM	FILE NAME: AR2275	
	COMPLETED: 8/10/2005		SHEET: 2 of 3	SHEET SIZE: B