

4

3

2

1

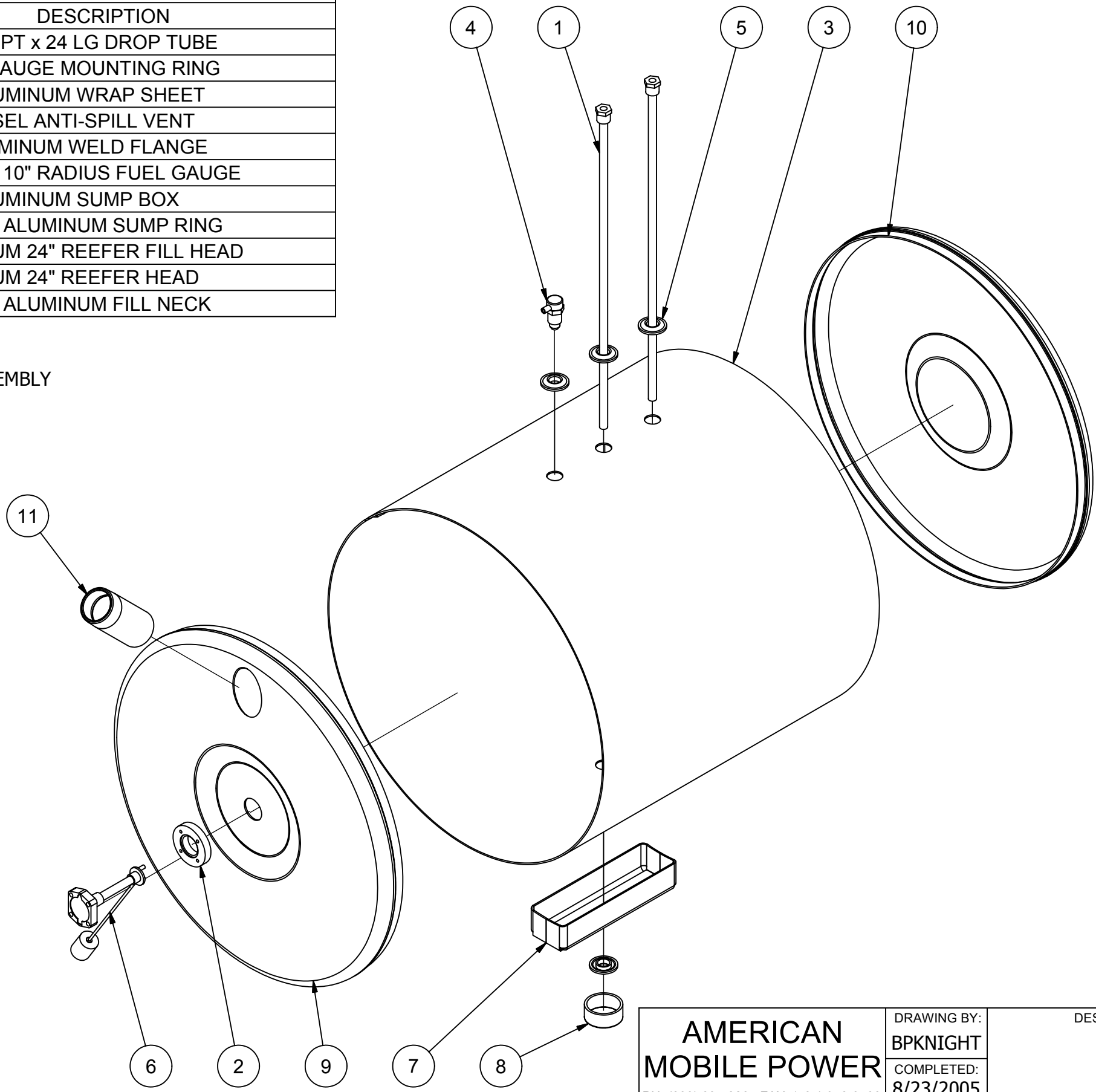
Parts List

ITEM	QTY	PART NUMBER	DESCRIPTION
1	2	24_DROP_TUBE	1/2" TO 3/8" NPT x 24 LG DROP TUBE
2	1	AGF-8175	ALUMINUM GAUGE MOUNTING RING
3	1	AR8550WS	.100 MILL ALUMINUM WRAP SHEET
4	1	ASV-0500	1/2" NPT DIESEL ANTI-SPILL VENT
5	4	AWF0500	1/2" NPT ALUMINUM WELD FLANGE
6	1	FGA-2200	ROCHESTER 10" RADIUS FUEL GAUGE
7	1	RA0000SB	.100 MILL ALUMINUM SUMP BOX
8	1	RA0000SR	2" SCH 40 x 1 ALUMINUM SUMP RING
9	1	RA0008FL	.100 MILL ALUM 24" REEFER FILL HEAD
10	1	RA0008HD	.100 MILL ALUM 24" REEFER HEAD
11	1	RA2000FN	2" SCH 80 x 5 ALUMINUM FILL NECK

AMP PARTS INCLUDE:
 -FNC-2000 2" FEMALE NON-VENTED CAP
 -BCV-0500 1/2" NPT DRAIN/CHECK PLUG ASSEMBLY

* OPTIONAL:
 -RMK-824-S MOUNTING KIT

NOTE:
 -PLUG ALL PORTS FOR SHIPMENT



AMERICAN MOBILE POWER <small>PH: (800) 634-8265 FAX: (765) 948-3403</small>	DRAWING BY: BPKNIGHT	DESIGN FOR: NAM	FILE NAME: AR8550	
	COMPLETED: 8/23/2005		SHEET: 1 of 3	SHEET SIZE: B

4

3

2

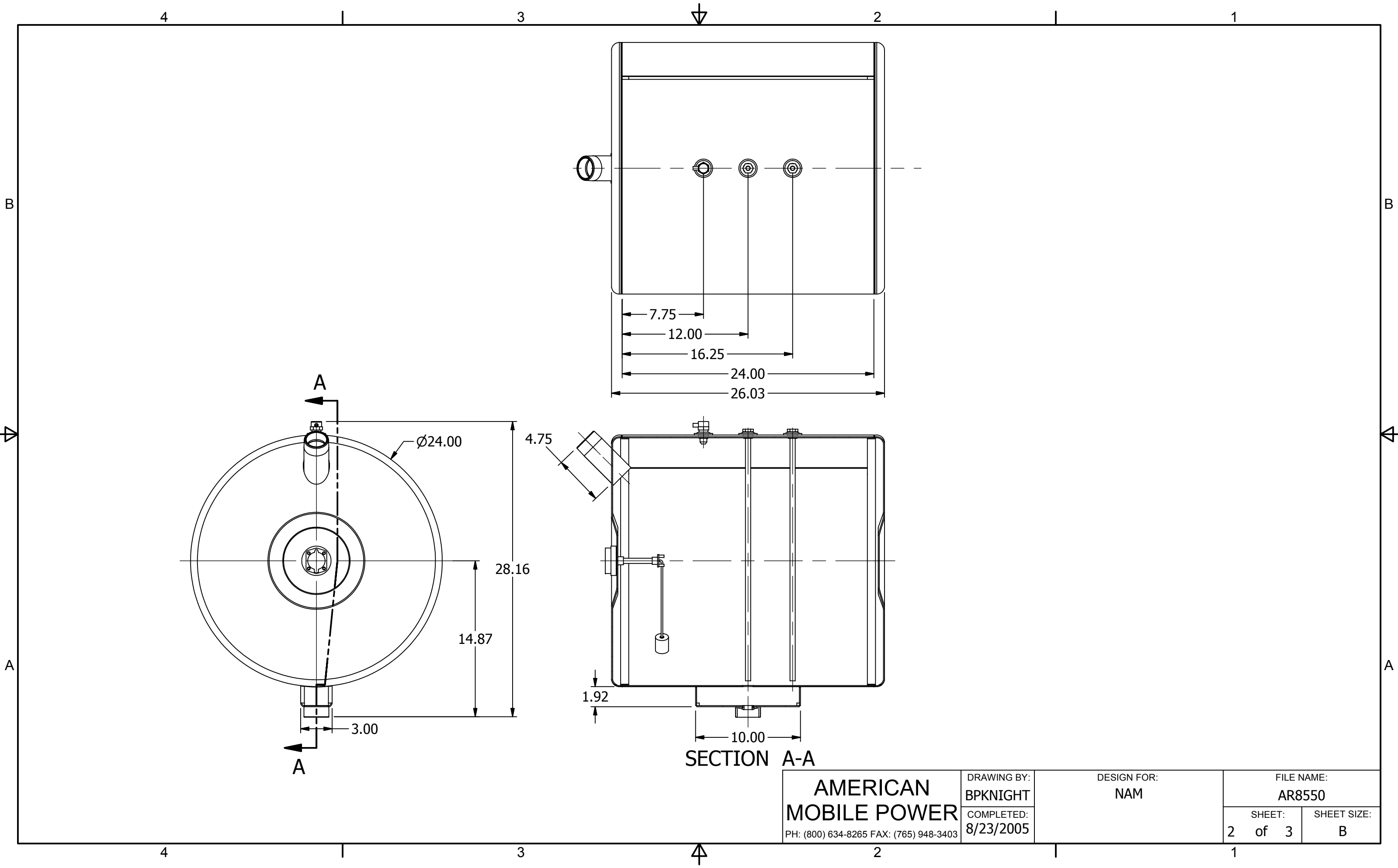
1

B

B

A

A

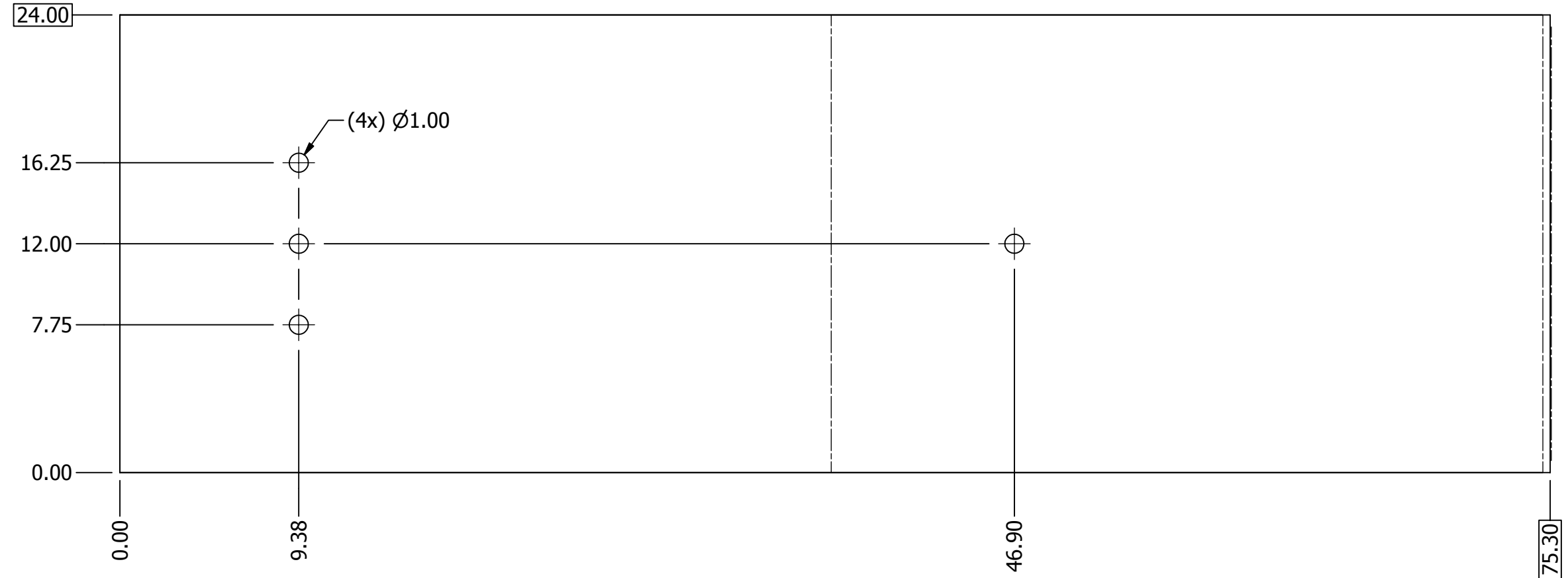


SECTION A-A

AMERICAN MOBILE POWER PH: (800) 634-8265 FAX: (765) 948-3403	DRAWING BY: BPKNIGHT	DESIGN FOR: NAM	FILE NAME: AR8550	
	COMPLETED: 8/23/2005		SHEET: 2 of 3	SHEET SIZE: B

AR8550WS MACHINE NUMBER 6658 OPERATION NUMBER 1
 NUMBER OF PIECES ON THIS BLANK = 1
 THICKNESS FOR FLAT CALCULATION = 0.1
 MATERIAL : 5052 H32 Mill Alumin
 BLANK SIZE: X = 75.3 Y = 24.
 BLANK INCLUDES TRIM STRIP OF : 0.
 LEFT BORDER OF : 0.
 UPPER BORDER OF : 0.
 RIGHT BORDER OF : 0.
 WORKHOLDER NO. 1 : 6.000 INCHES
 WORKHOLDER NO. 2 : 30.000 INCHES

Parts List			
ITEM	QTY	PART NUMBER	DESCRIPTION
1	1	AR8550WS	.100 MILL ALUMINUM WRAP SHEET



AMERICAN MOBILE POWER PH: (800) 634-8265 FAX: (765) 948-3403	DRAWING BY: BPKNIGHT	DESIGN FOR: NAM	FILE NAME: AR8550	
	COMPLETED: 8/23/2005		SHEET: 3 of 3	SHEET SIZE: B