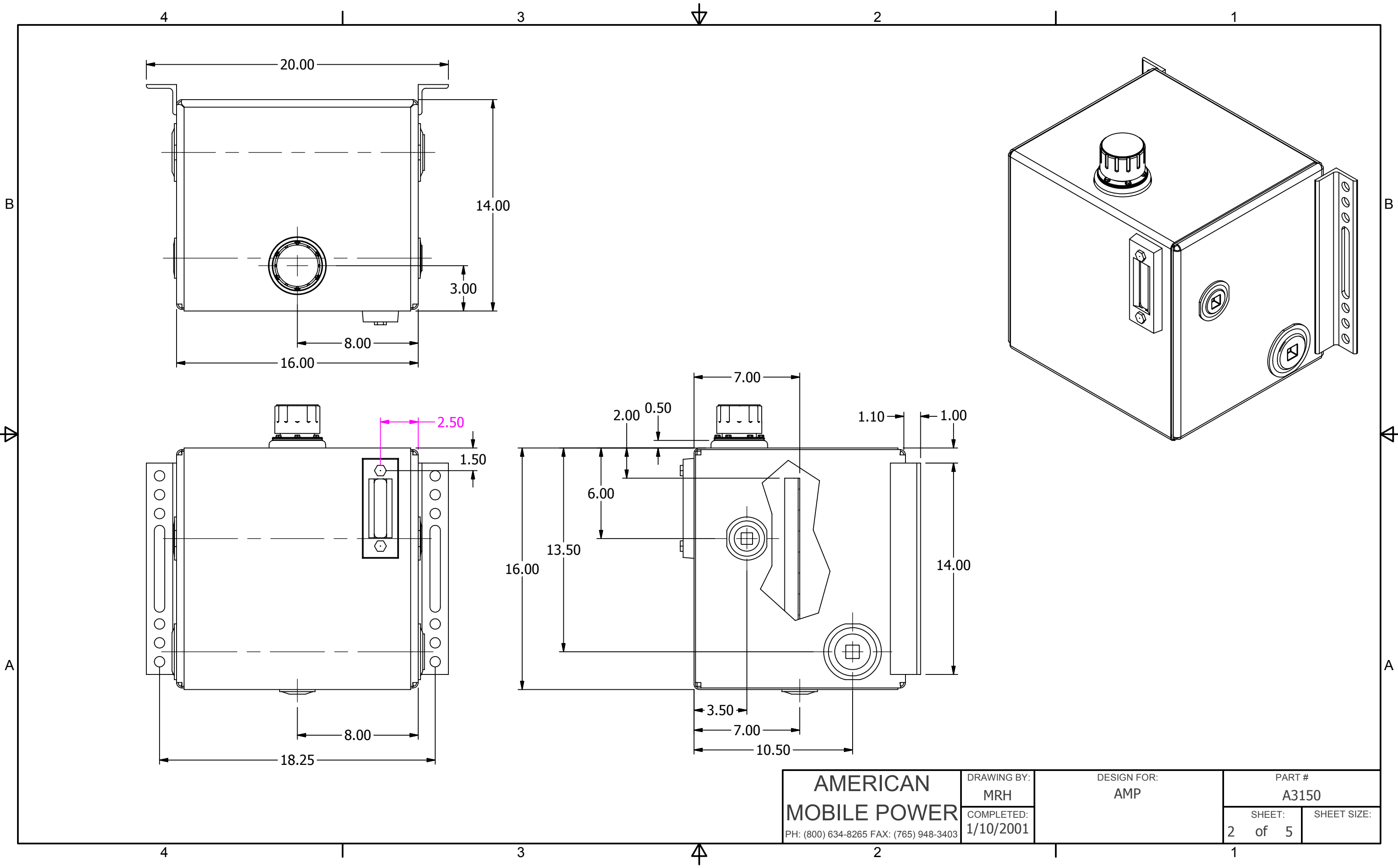


Parts List			
ITEM	QTY	PART NUMBER	DESCRIPTION
1	2	0500-13-FWN	1/2-13" UNC WELD NUT
2	1	57XL-40N	40 MICRON FILL W/NYLON STRAINER
3	1	A3150BF	12 GA HRPO BAFFLE
4	1	A3150BS	12 GA HRPO SIDE-BACK-SIDE
5	1	A3150FS	12 GA HRPO SIDE-FRONT-SIDE
6	1	AFA-302	3.75 FILL ASS'Y STEEL WELD FLANGE
7	2	ANGLE14MFG	2 X 2 X 1/4" MFG ANGLE
8	1	ASG-105	5" SIGHT TEMP GAUGE
9	1	MAGPLUG0750	3/4" NPT MAG PLUG
10	1	PLUG1250	1 1/4" NPT SQUARE SOCKET PLUG
11	1	PLUG2000	2" NPT SQUARE SOCKET PLUG
12	1	SWF0750	3/4" NPT WELD FLANGE
13	2	SWF1250	1 1/4" NPT WELD FLANGE
14	2	SWF2000	2" NPT WELD FLANGE

NOTES:  
 -POWDER COAT BLACK  
 -APPLY RUST INHIBITOR INSIDE  
 -PLUG ALL PORTS FOR SHIPMENT

<b>AMERICAN MOBILE POWER</b> <small>PH: (800) 634-8265 FAX: (765) 948-3403</small>	DRAWING BY: MRH	DESIGN FOR: AMP	PART # A3150	
	COMPLETED: 1/10/2001		SHEET: 1 of 5	SHEET SIZE:



**AMERICAN  
MOBILE POWER**  
PH: (800) 634-8265 FAX: (765) 948-3403

DRAWING BY:  
MRH  
COMPLETED:  
1/10/2001

DESIGN FOR:  
AMP

PART # A3150	
SHEET: 2 of 5	SHEET SIZE: