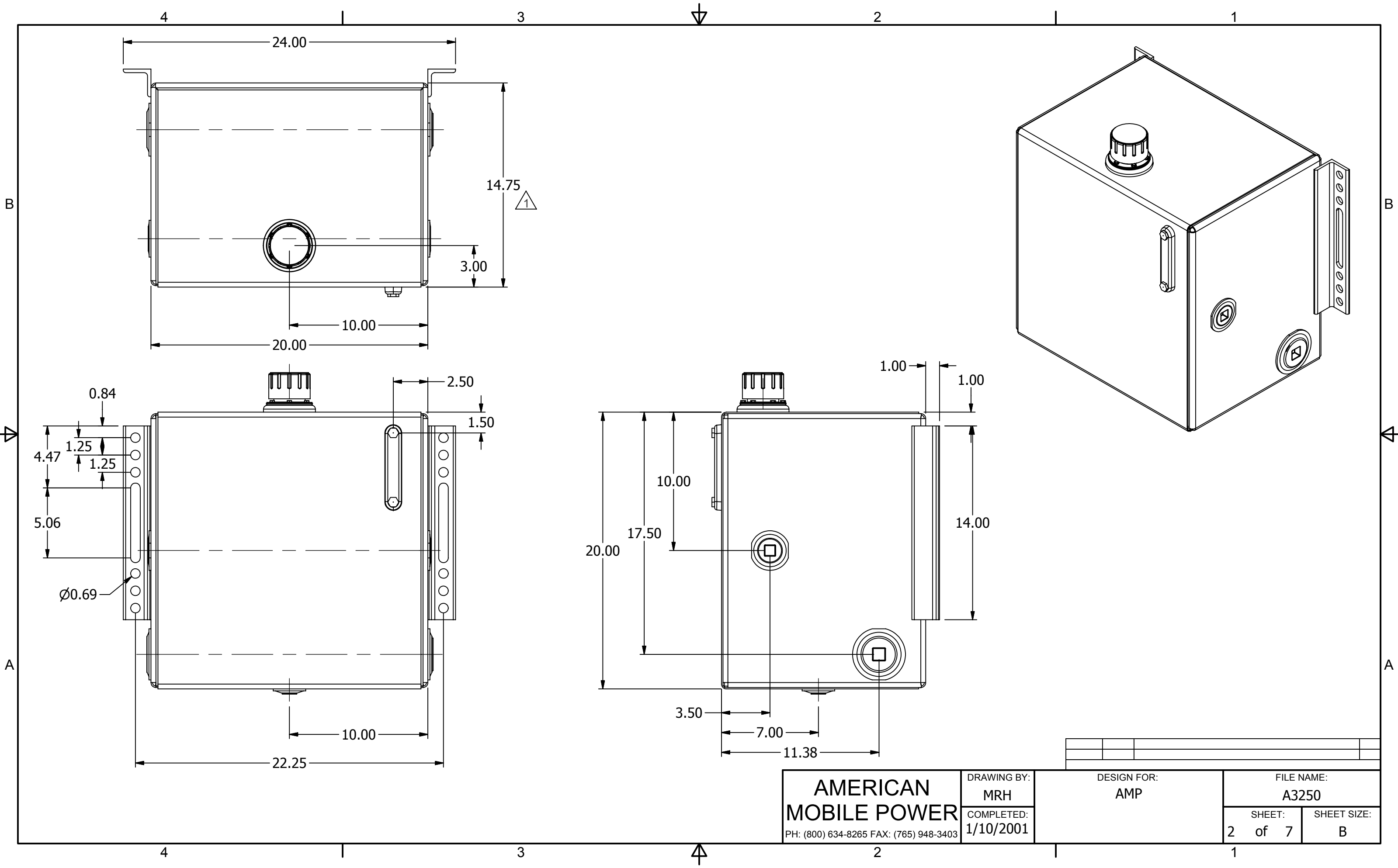


Parts List			
ITEM	QTY	PART NUMBER	DESCRIPTION
1	1	57XL-40N	40 MICRON FILL W/NYLON STRAINER
2	1	MAGPLUG0750	3/4" NPT MAG PLUG
3	1	N_A3250	NAM ASSEMBLY 79 lbs
4	1	PLUG1250	1 1/4" NPT SQUARE SOCKET PLUG
5	1	PLUG2000	2" NPT SQUARE SOCKET PLUG
6	1	T-LLG-5	LENZ 5" SIGHT TEMP GAUGE

NOTES:  
 -POWDER COAT BLACK  
 -APPLY RUST INHIBITOR INSIDE  
 -PLUG ALL PORTS FOR SHIPMENT


<b>AMERICAN MOBILE POWER</b> PH: (800) 634-8265 FAX: (765) 948-3403	DRAWING BY: MRH	DESIGN FOR: AMP	FILE NAME: A3250	
	COMPLETED: 1/10/2001		SHEET: 1 of 7	SHEET SIZE: B



**AMERICAN  
MOBILE POWER**

PH: (800) 634-8265 FAX: (765) 948-3403

DRAWING BY:  
MRH

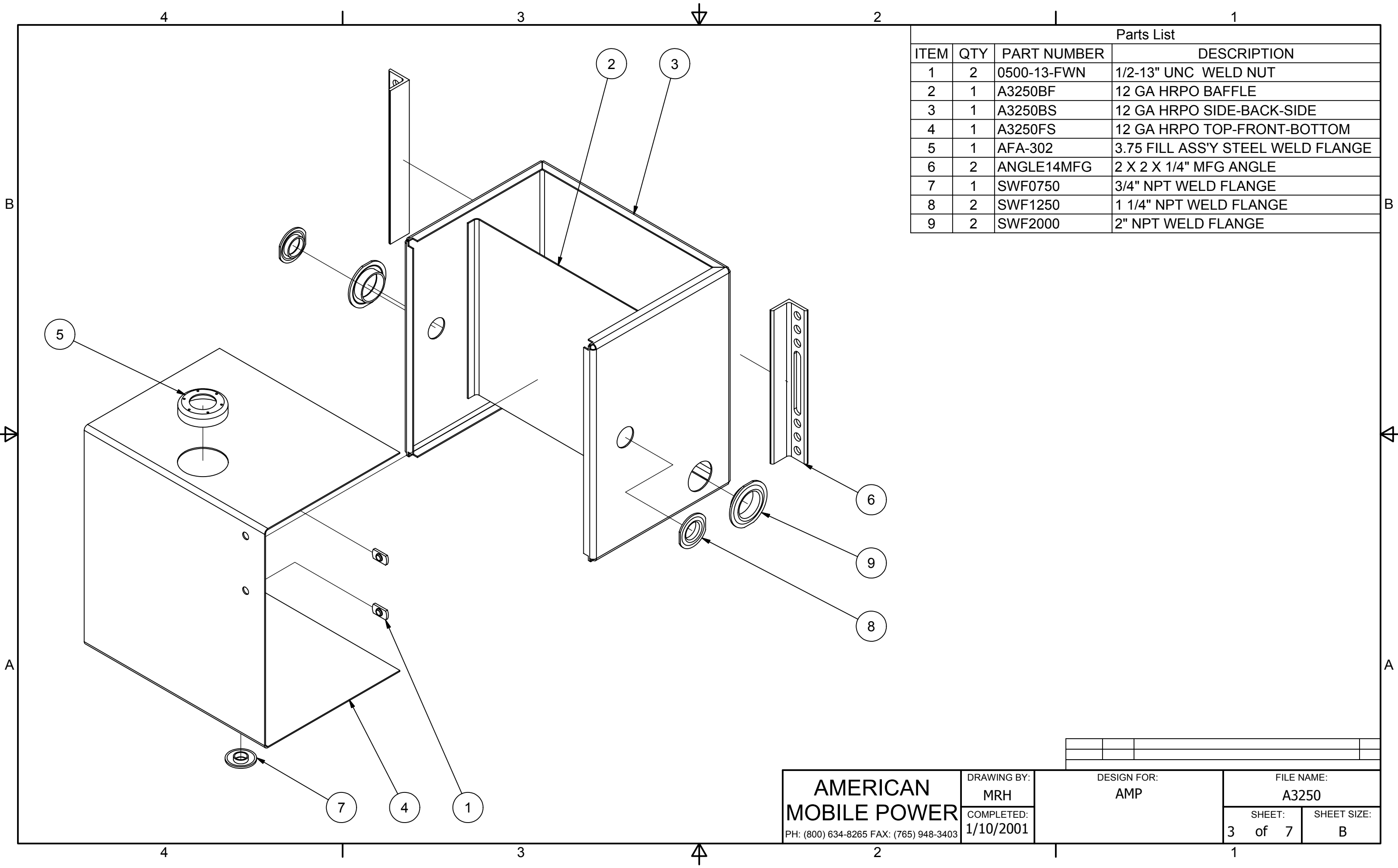
COMPLETED:  
1/10/2001

DESIGN FOR:  
AMP

FILE NAME:  
A3250

SHEET:  
2 of 7

SHEET SIZE:  
B



Parts List			
ITEM	QTY	PART NUMBER	DESCRIPTION
1	2	0500-13-FWN	1/2-13" UNC WELD NUT
2	1	A3250BF	12 GA HRPO BAFFLE
3	1	A3250BS	12 GA HRPO SIDE-BACK-SIDE
4	1	A3250FS	12 GA HRPO TOP-FRONT-BOTTOM
5	1	AFA-302	3.75 FILL ASS'Y STEEL WELD FLANGE
6	2	ANGLE14MFG	2 X 2 X 1/4" MFG ANGLE
7	1	SWF0750	3/4" NPT WELD FLANGE
8	2	SWF1250	1 1/4" NPT WELD FLANGE
9	2	SWF2000	2" NPT WELD FLANGE

**AMERICAN  
MOBILE POWER**  
PH: (800) 634-8265 FAX: (765) 948-3403

DRAWING BY:  
MRH  
COMPLETED:  
1/10/2001

DESIGN FOR:  
AMP

FILE NAME:  
A3250  
SHEET:  
3 of 7  
SHEET SIZE:  
B