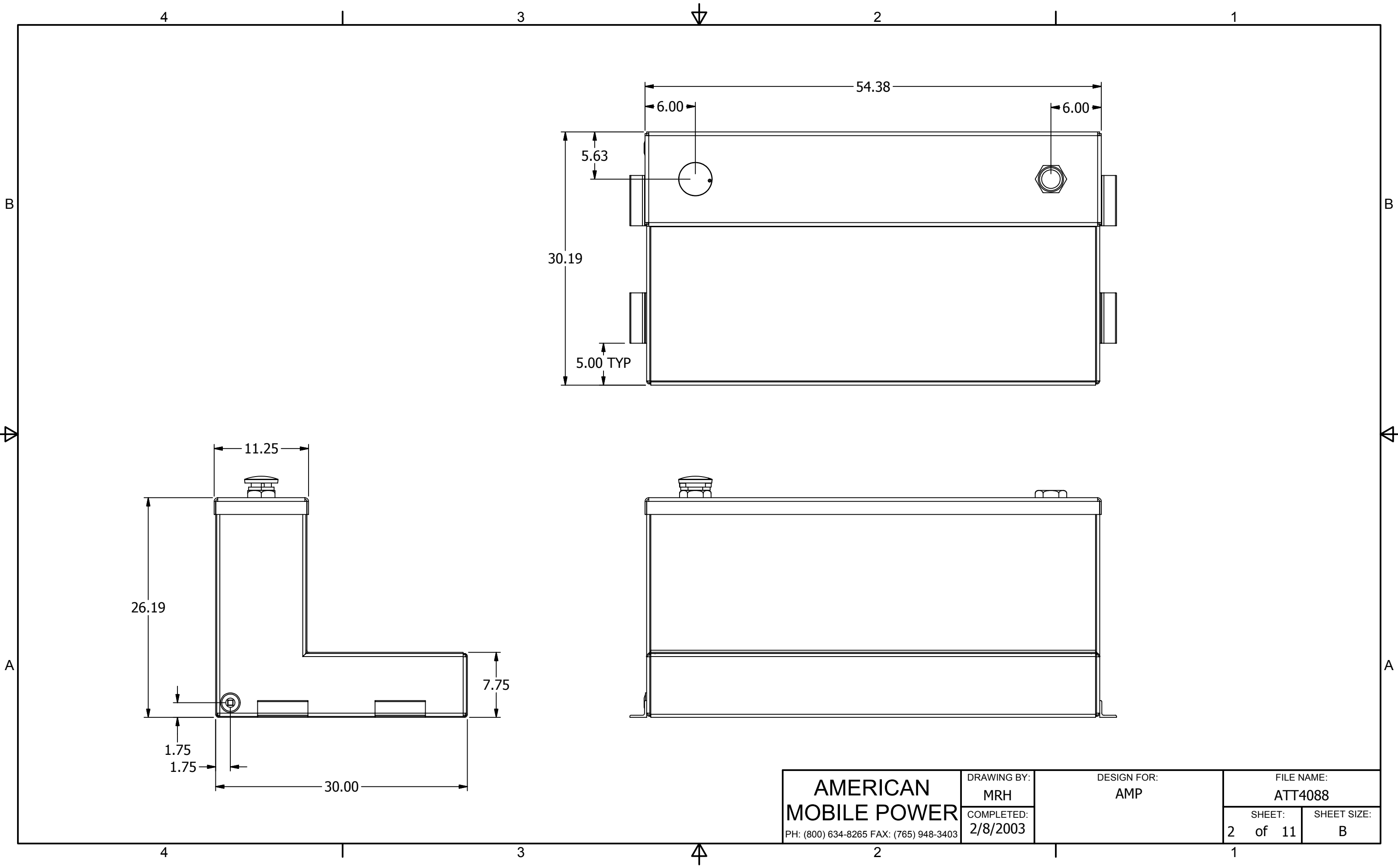


Parts List			
ITEM	QTY	PART NUMBER	DESCRIPTION
1	1	906001-4	2" NPT LOCKING VENTED DIESEL FILL CAP
2	1	MAGPLUG0750	3/4" NPT MAG PLUG
3	1	N_ATT4088	54Wx26H/7.75Hx30D/11.25D 121 lbs

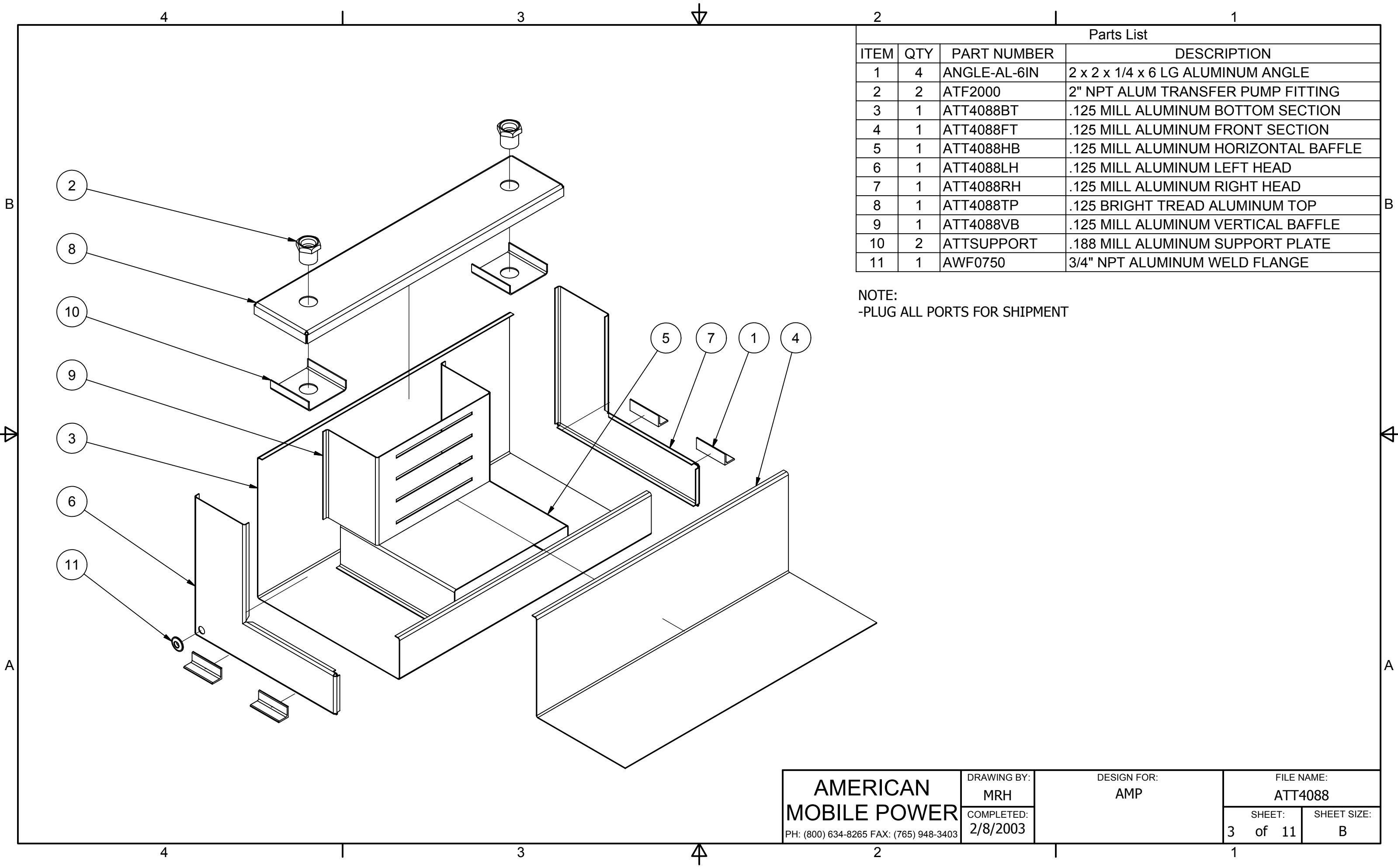
FILL CAP SHOWN FOR REFERENCE;  
MAY BE INSTALLED IN EITHER PORT.

NOTE:  
-PLUG ALL PORTS FOR SHIPMENT

<b>AMERICAN MOBILE POWER</b> <small>PH: (800) 634-8265 FAX: (765) 948-3403</small>	DRAWING BY: MRH	DESIGN FOR: AMP	FILE NAME: ATT4088	
	COMPLETED: 2/8/2003		SHEET: 1 of 11	SHEET SIZE: B



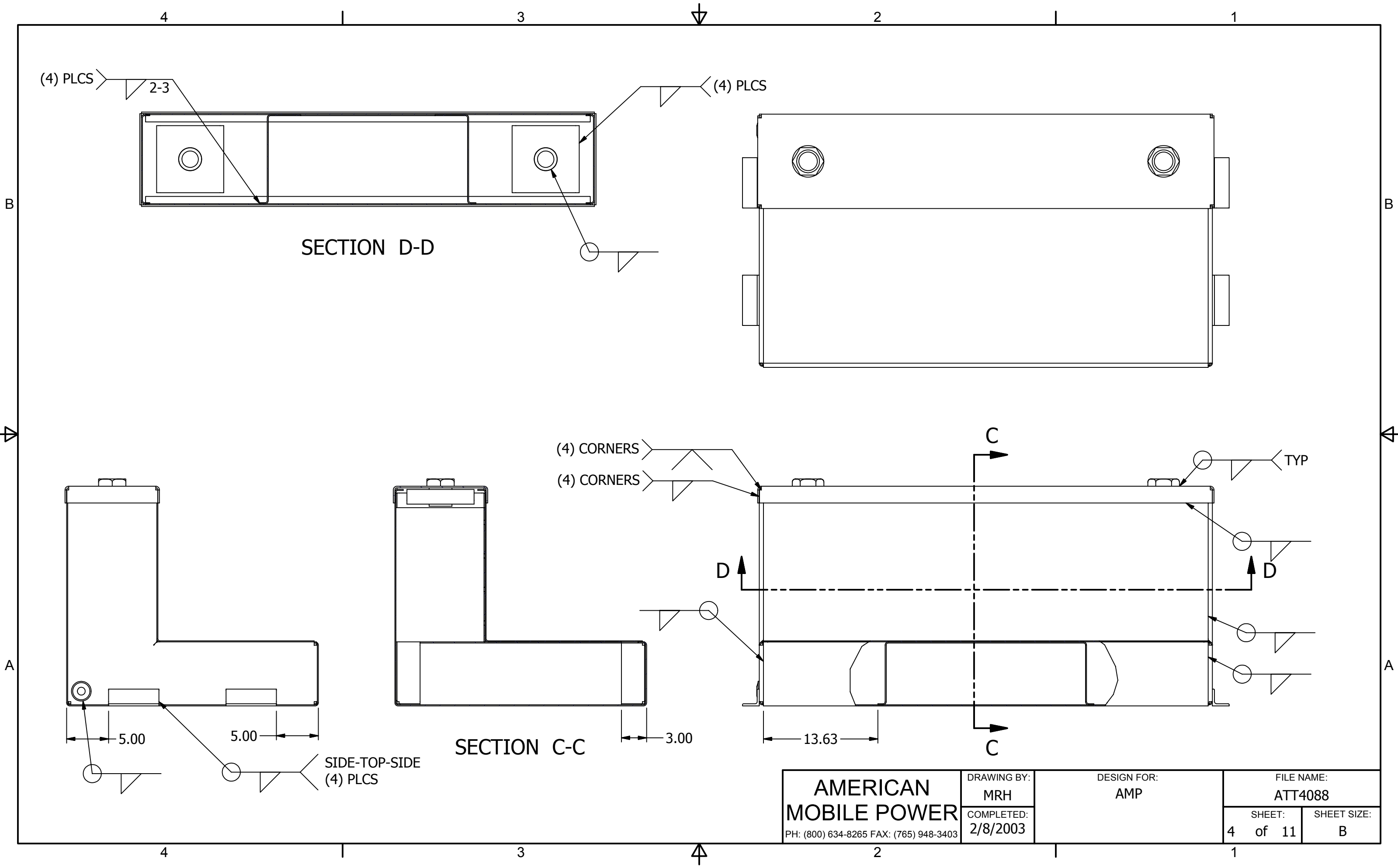
<b>AMERICAN MOBILE POWER</b> PH: (800) 634-8265 FAX: (765) 948-3403	DRAWING BY: MRH	DESIGN FOR: AMP	FILE NAME: ATT4088	
	COMPLETED: 2/8/2003		SHEET: 2 of 11	SHEET SIZE: B



Parts List			
ITEM	QTY	PART NUMBER	DESCRIPTION
1	4	ANGLE-AL-6IN	2 x 2 x 1/4 x 6 LG ALUMINUM ANGLE
2	2	ATF2000	2" NPT ALUM TRANSFER PUMP FITTING
3	1	ATT4088BT	.125 MILL ALUMINUM BOTTOM SECTION
4	1	ATT4088FT	.125 MILL ALUMINUM FRONT SECTION
5	1	ATT4088HB	.125 MILL ALUMINUM HORIZONTAL BAFFLE
6	1	ATT4088LH	.125 MILL ALUMINUM LEFT HEAD
7	1	ATT4088RH	.125 MILL ALUMINUM RIGHT HEAD
8	1	ATT4088TP	.125 BRIGHT TREAD ALUMINUM TOP
9	1	ATT4088VB	.125 MILL ALUMINUM VERTICAL BAFFLE
10	2	ATTSUPPORT	.188 MILL ALUMINUM SUPPORT PLATE
11	1	AWF0750	3/4" NPT ALUMINUM WELD FLANGE

NOTE:  
-PLUG ALL PORTS FOR SHIPMENT

<b>AMERICAN MOBILE POWER</b> <small>PH: (800) 634-8265 FAX: (765) 948-3403</small>	DRAWING BY: MRH	DESIGN FOR: AMP	FILE NAME: ATT4088	
	COMPLETED: 2/8/2003		SHEET: 3 of 11	SHEET SIZE: B



SECTION D-D

SECTION C-C

SIDE-TOP-SIDE  
(4) PLCS

<b>AMERICAN MOBILE POWER</b> PH: (800) 634-8265 FAX: (765) 948-3403	DRAWING BY: MRH	DESIGN FOR: AMP	FILE NAME: ATT4088	
	COMPLETED: 2/8/2003		SHEET: 4 of 11	SHEET SIZE: B