

Parts List			
ITEM	QTY	PART NUMBER	DESCRIPTION
1	1	906001-4	2" NPT LOCKING VENTED DIESEL FILL CAP
2	1	MAGPLUG0750	3/4" NPT MAG PLUG
3	1	N_ATT4090	NAM ASSEMBLY 95 1/2 lbs

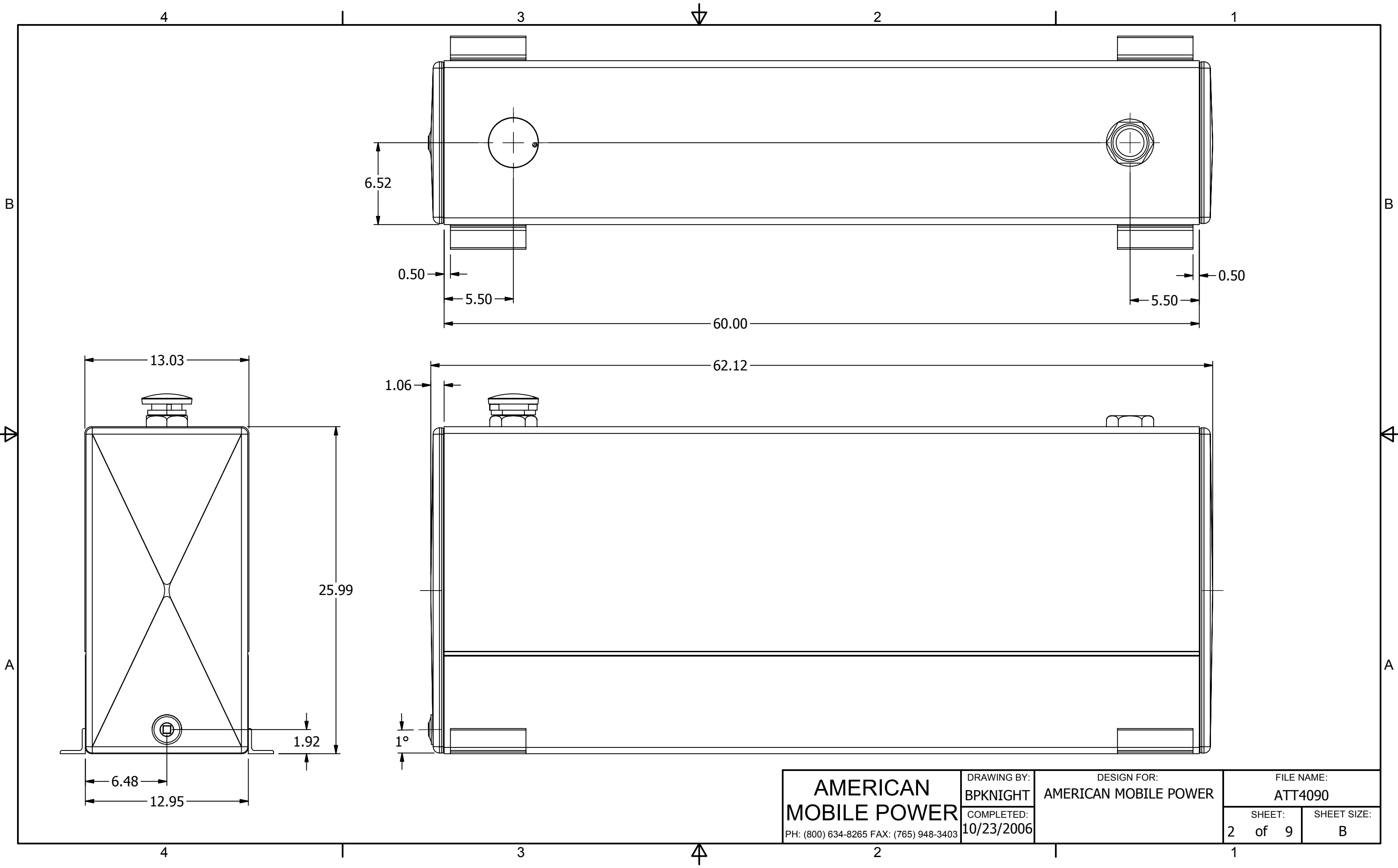
NOTE:
-PLUG ALL PORTS FOR SHIPMENT

**AMERICAN
MOBILE POWER**
PH: (800) 634-8265 FAX: (765) 948-3403

DRAWING BY:
BPKNIGHT
COMPLETED:
10/23/2006

DESIGN FOR:
AMERICAN MOBILE POWER

FILE NAME:
ATT4090
SHEET:
1 of 9
SHEET SIZE:
B



**AMERICAN
MOBILE POWER**

PH: (800) 634-8265 FAX: (765) 948-3403

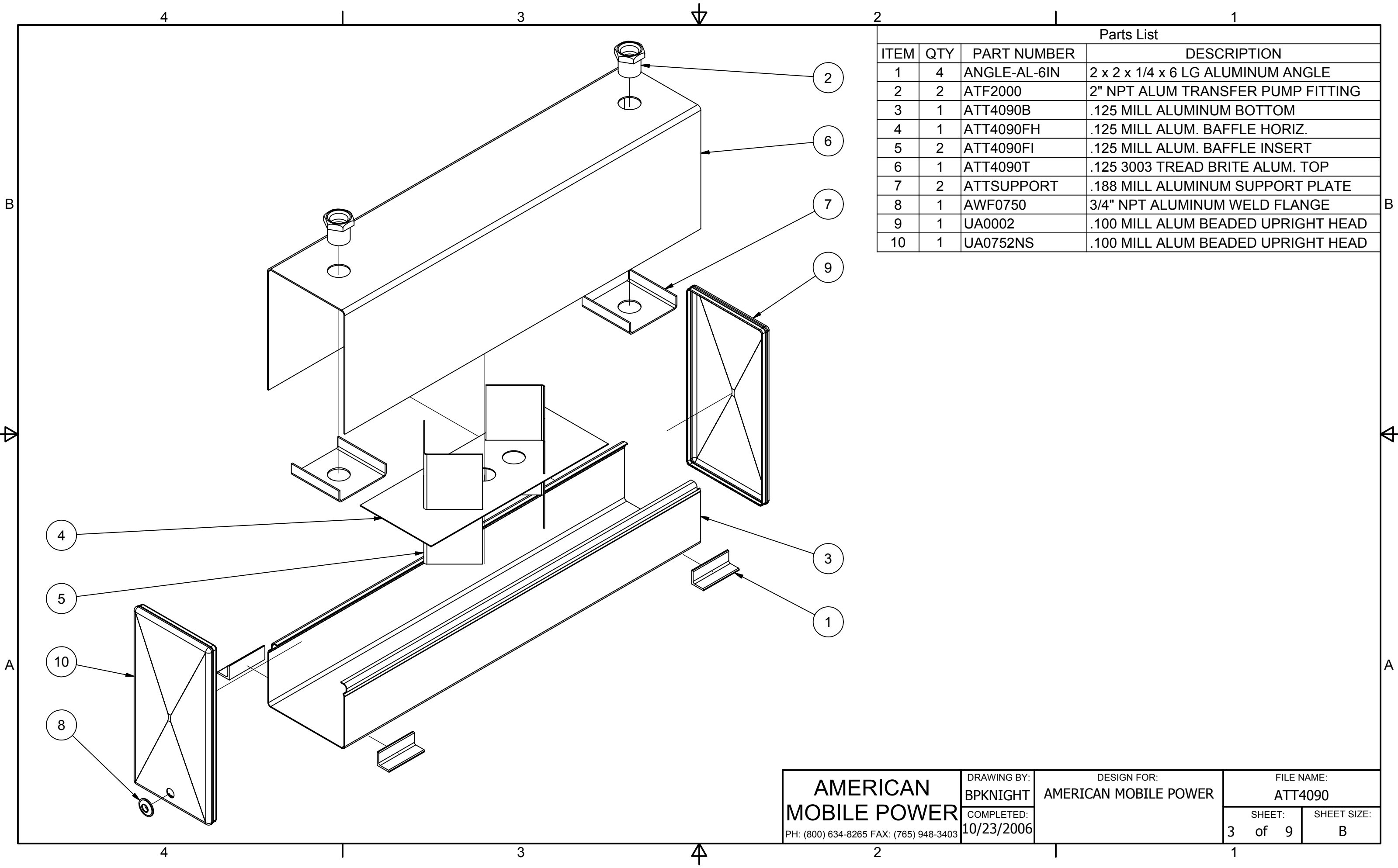
DRAWING BY:
BPKNIGHT
COMPLETED:
10/23/2006

DESIGN FOR:
AMERICAN MOBILE POWER

FILE NAME:
ATT4090

SHEET:
2 of 9

SHEET SIZE:
B



Parts List			
ITEM	QTY	PART NUMBER	DESCRIPTION
1	4	ANGLE-AL-6IN	2 x 2 x 1/4 x 6 LG ALUMINUM ANGLE
2	2	ATF2000	2" NPT ALUM TRANSFER PUMP FITTING
3	1	ATT4090B	.125 MILL ALUMINUM BOTTOM
4	1	ATT4090FH	.125 MILL ALUM. BAFFLE HORIZ.
5	2	ATT4090FI	.125 MILL ALUM. BAFFLE INSERT
6	1	ATT4090T	.125 3003 TREAD BRITE ALUM. TOP
7	2	ATTSUPPORT	.188 MILL ALUMINUM SUPPORT PLATE
8	1	AWF0750	3/4" NPT ALUMINUM WELD FLANGE
9	1	UA0002	.100 MILL ALUM BEADED UPRIGHT HEAD
10	1	UA0752NS	.100 MILL ALUM BEADED UPRIGHT HEAD

AMERICAN MOBILE POWER <small>PH: (800) 634-8265 FAX: (765) 948-3403</small>	<small>DRAWING BY:</small> BPKNIGHT	<small>DESIGN FOR:</small> AMERICAN MOBILE POWER	<small>FILE NAME:</small> ATT4090	
	<small>COMPLETED:</small> 10/23/2006		<small>SHEET:</small> 3 of 9	<small>SHEET SIZE:</small> B