

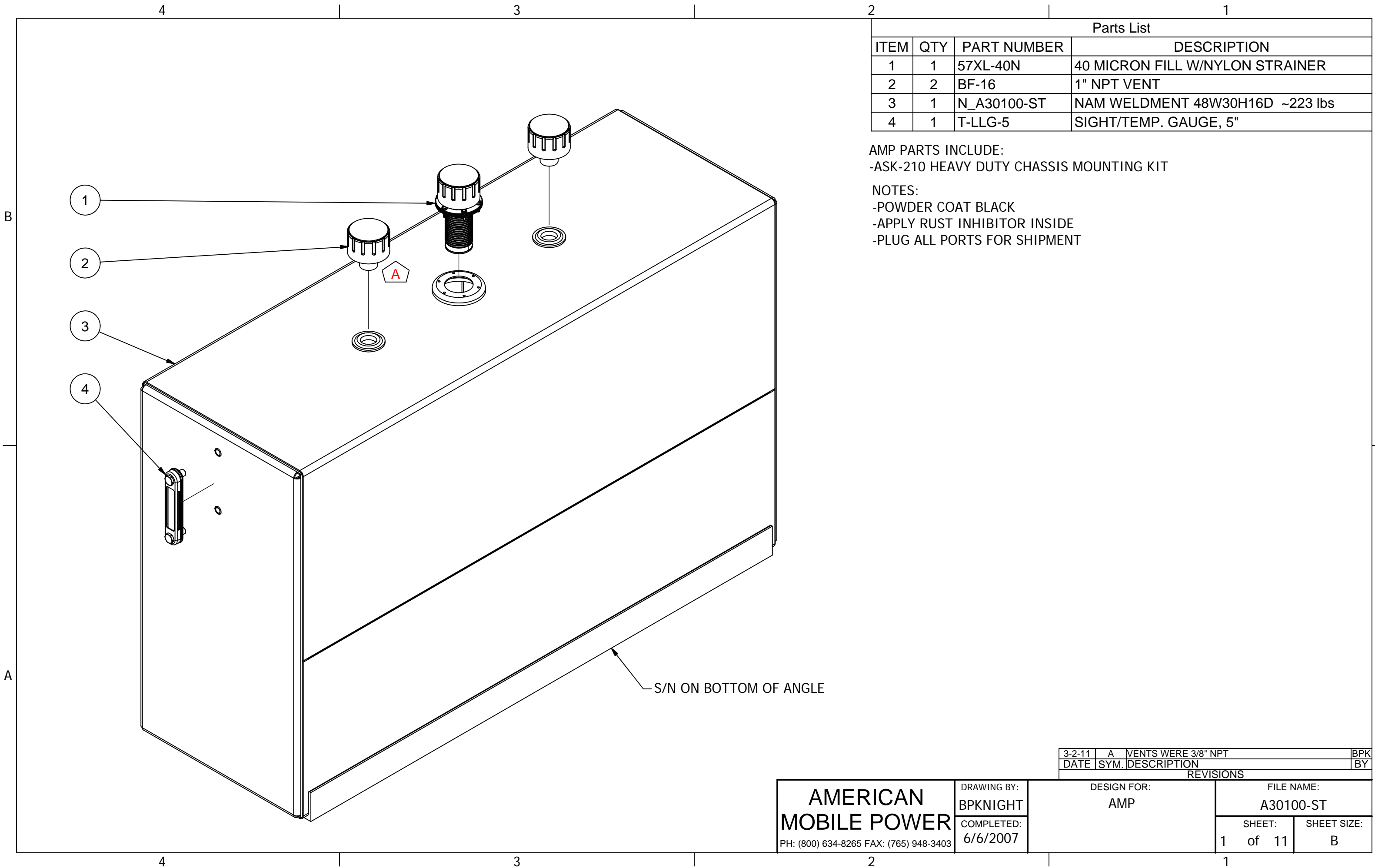
Parts List			
ITEM	QTY	PART NUMBER	DESCRIPTION
1	1	57XL-40N	40 MICRON FILL W/NYLON STRAINER
2	2	BF-16	1" NPT VENT
3	1	N_A30100-ST	NAM WELDMENT 48W30H16D ~223 lbs
4	1	T-LLG-5	SIGHT/TEMP. GAUGE, 5"

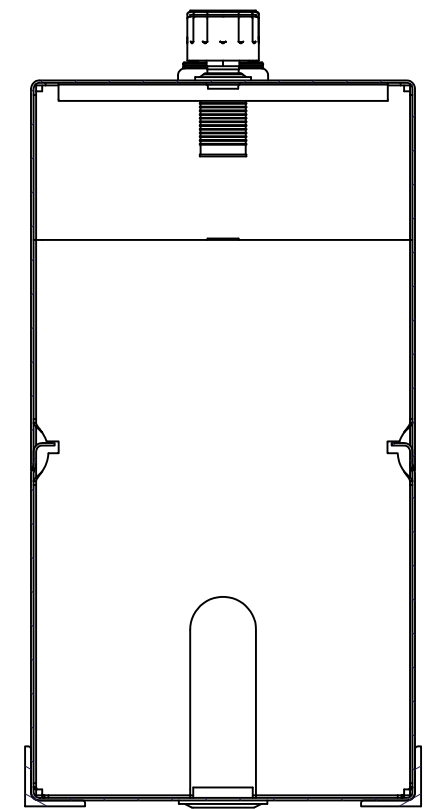
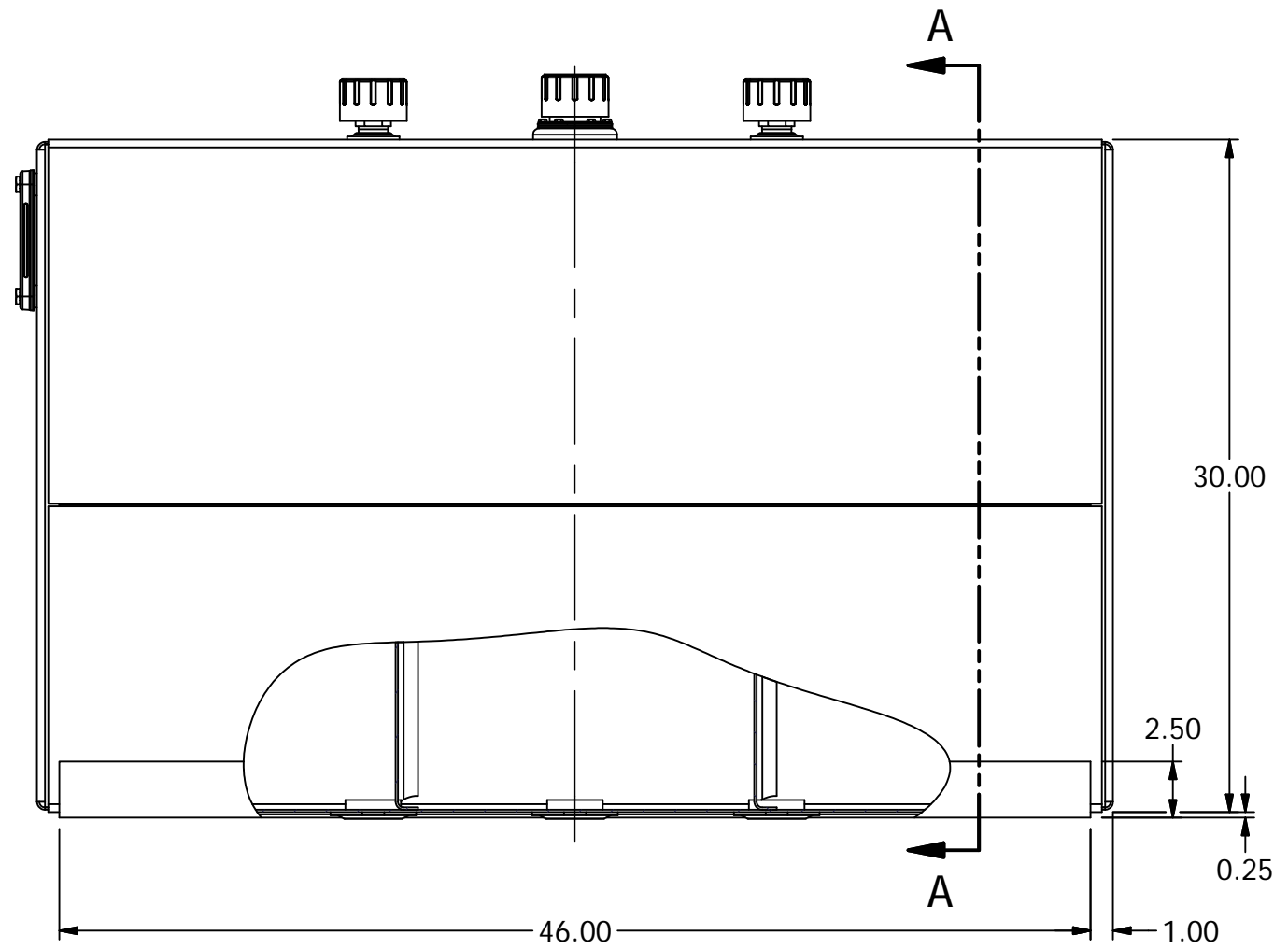
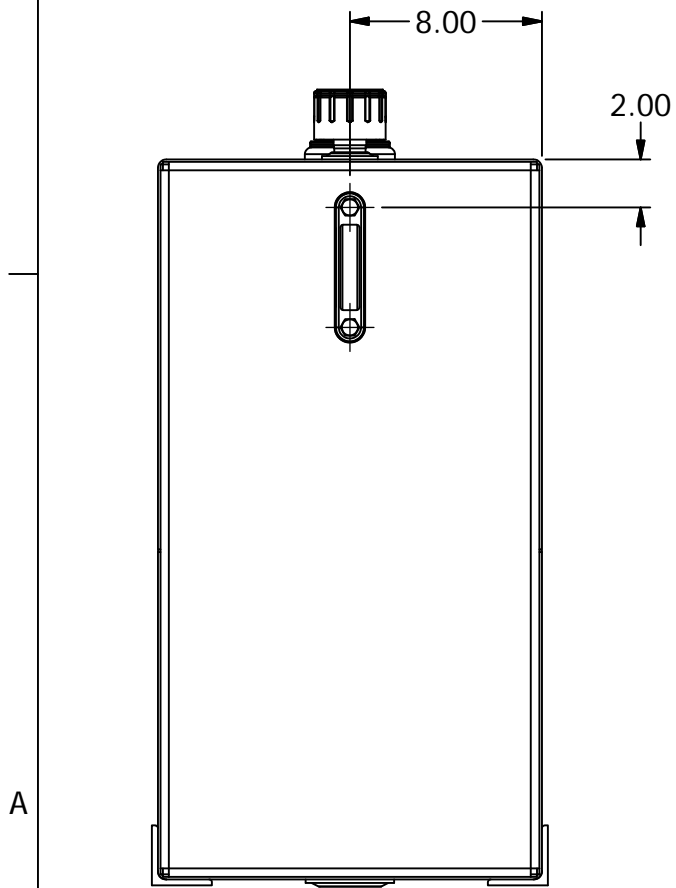
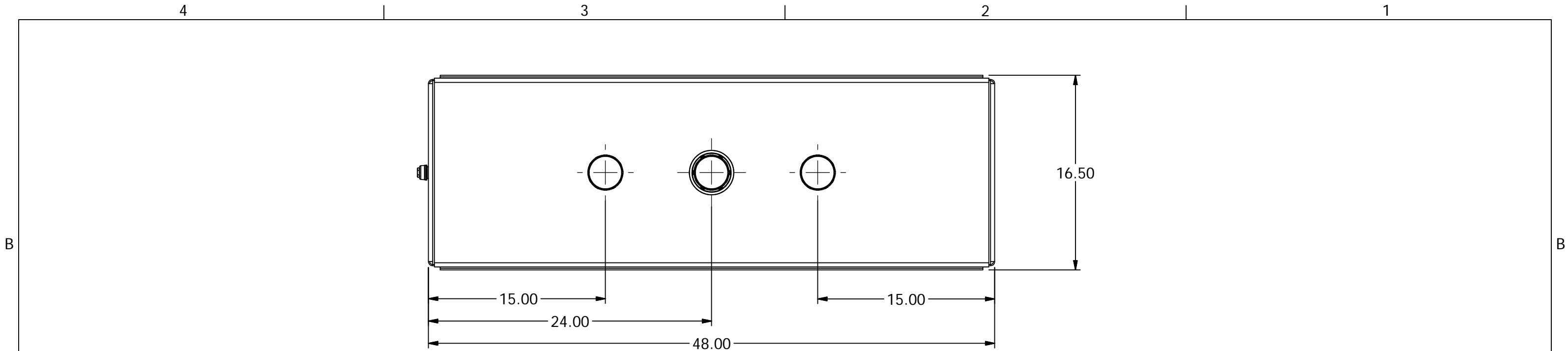
AMP PARTS INCLUDE:  
 -ASK-210 HEAVY DUTY CHASSIS MOUNTING KIT

NOTES:  
 -POWDER COAT BLACK  
 -APPLY RUST INHIBITOR INSIDE  
 -PLUG ALL PORTS FOR SHIPMENT

DATE	SYM.	DESCRIPTION	BY
3-2-11	A	VENTS WERE 3/8" NPT	BPK

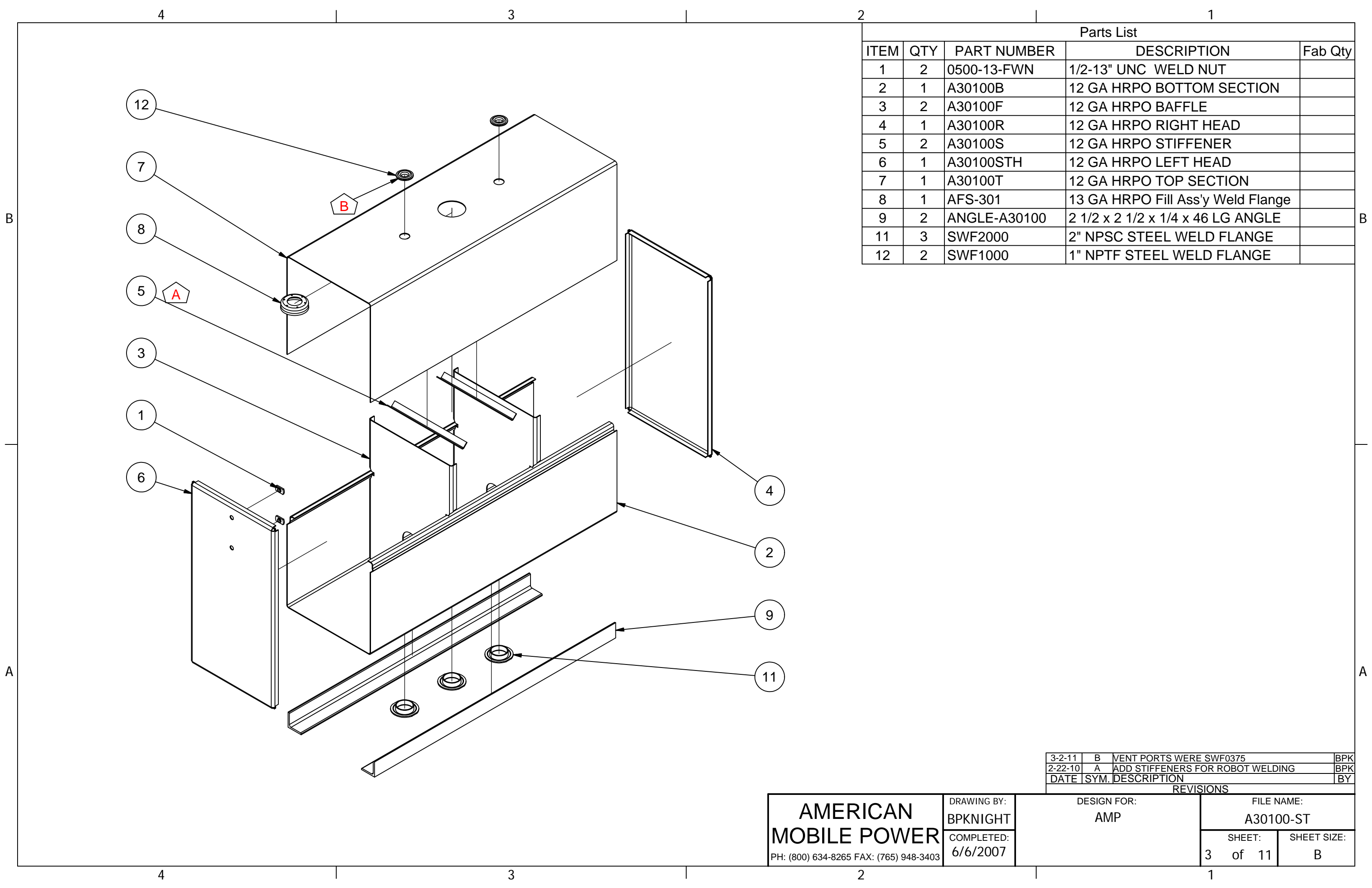
<b>AMERICAN MOBILE POWER</b> PH: (800) 634-8265 FAX: (765) 948-3403	DRAWING BY: BPKNIGHT	DESIGN FOR: AMP	FILE NAME: A30100-ST	
	COMPLETED: 6/6/2007		SHEET: 1 of 11	SHEET SIZE: B





SECTION A-A

<b>AMERICAN MOBILE POWER</b> PH: (800) 634-8265 FAX: (765) 948-3403	DRAWING BY: BPKNIGHT	DESIGN FOR: AMP	FILE NAME: A30100-ST	
	COMPLETED: 6/6/2007		SHEET: 2 of 11	SHEET SIZE: B



Parts List				
ITEM	QTY	PART NUMBER	DESCRIPTION	Fab Qty
1	2	0500-13-FWN	1/2-13" UNC WELD NUT	
2	1	A30100B	12 GA HRPO BOTTOM SECTION	
3	2	A30100F	12 GA HRPO BAFFLE	
4	1	A30100R	12 GA HRPO RIGHT HEAD	
5	2	A30100S	12 GA HRPO STIFFENER	
6	1	A30100STH	12 GA HRPO LEFT HEAD	
7	1	A30100T	12 GA HRPO TOP SECTION	
8	1	AFS-301	13 GA HRPO Fill Ass'y Weld Flange	
9	2	ANGLE-A30100	2 1/2 x 2 1/2 x 1/4 x 46 LG ANGLE	
11	3	SWF2000	2" NPSC STEEL WELD FLANGE	
12	2	SWF1000	1" NPTF STEEL WELD FLANGE	

REVISIONS				
DATE	SYM.	DESCRIPTION	BY	
3-2-11	B	VENT PORTS WERE SWF0375	BPK	
2-22-10	A	ADD STIFFENERS FOR ROBOT WELDING	BPK	

<b>AMERICAN MOBILE POWER</b> PH: (800) 634-8265 FAX: (765) 948-3403	DRAWING BY: <b>BPKNIGHT</b>	DESIGN FOR: <b>AMP</b>	FILE NAME: <b>A30100-ST</b>	
	COMPLETED: <b>6/6/2007</b>		SHEET: <b>3 of 11</b>	SHEET SIZE: <b>B</b>